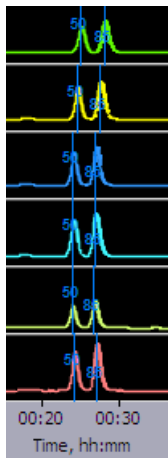


## H. Run



1. Close the lid, go to the Main Tab, and make sure the proper protocol is loaded in the "Protocol Name" field.
2. Press "START". The run will automatically stop when every collection is complete.

Internal markers should appear as shown

| Target | Time to Collect (min) |
|--------|-----------------------|
| 100    | 31                    |
| 150    | 38                    |
| 250    | 47                    |

## I. Collect Fractions

1. **Remove samples using a standard 100-200µl pipette.** Samples will be in a Tris-TAPS buffer, 30µl volume. Do not let samples remain in cassette overnight.
2. **Remove cassette and dispose of properly.** Do not keep used cassettes in the PippinHT with the cover closed. Humidity from the cassette may cause damage to electrodes.

Help: [support@sagescience.com](mailto:support@sagescience.com) or call 978.922.1832

 sage science © 2024 Sage Science, Inc. PippinHT is a trademark of Sage Science, Inc.

# PippinHT™ Quick Guide

**Product:** HTG-3010 or HTG-3004  
**Software:** v.1.08 CD 10

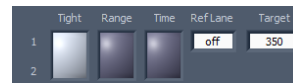
## A. Prepare DNA samples with Internal Standards

1. For best results, samples should be de-proteinized.
2. Bring DNA sample up to 20µl with TE.
3. Bring the internal standard/loading solution (**30G**) to room temperature.
4. For each sample, combine the 20µl DNA sample with 5µl of the **30G** solution.
5. Mix samples thoroughly (vortex mixer). Briefly centrifuge to collect.

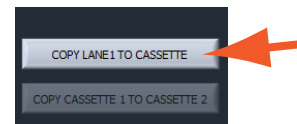
## B. Program a Protocol

1. In the PippinHT Software, go to the Protocol Editor Tab.
2. Click the "Cassette" folder, and select the appropriate cassette definition:  
**3% Agarose, 100-250 bp, 30G**

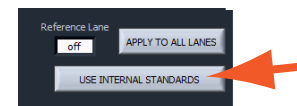
3. Make sure the Cassette 1 tab is selected.
4. Enter size selection parameters in lane-pair 1/2.



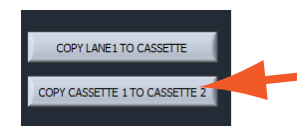
5. To copy the size selection to the remainder of the lanes, press "Copy Lane 1 to Cassette":



6. Press "Use Internal Standards" to assign internal standards to each lane pair.



7. Select the cassette 2 tab. To copy the cassette 1 size selection parameters to cassette 2, press "Copy Cassette 1 to Cassette 2":



8. Press "Save As" and name and save the protocol.

### C. Calibrate the Optics with the Calibration Fixture

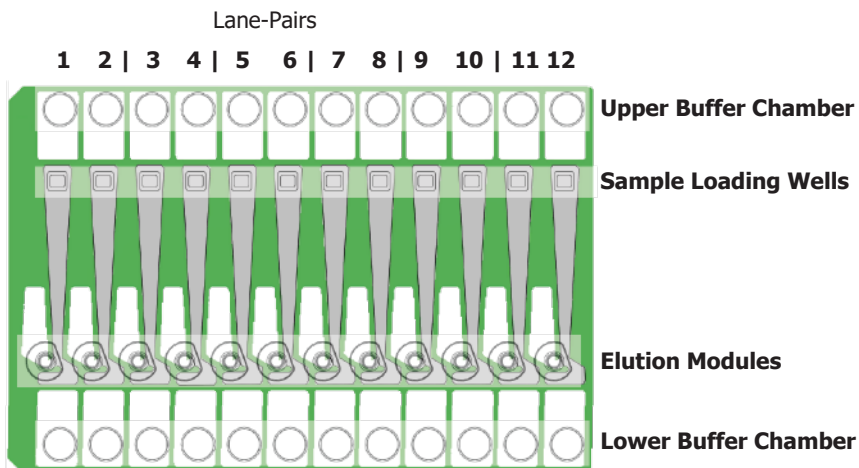
1. Place the calibration fixtures onto both optical nests. Close the Lid.
2. Press "CALIBRATE" to launch the calibration window.
3. Press the "CALIBRATE" button in the window, and when complete, press "EXIT".

### D. Inspect the Gel Cassette

1. **Remove the cassettes** from the foil packaging.
2. **Inspect the gel columns.** Look for obvious breakage of the agarose column in each channel. Inspect for bubbles due to separation of agarose from the bottom of cassette (especially in the region used for optical detection). Do not use the affected lane pair if these problems are detected, the remainder of the lanes pairs can be used.

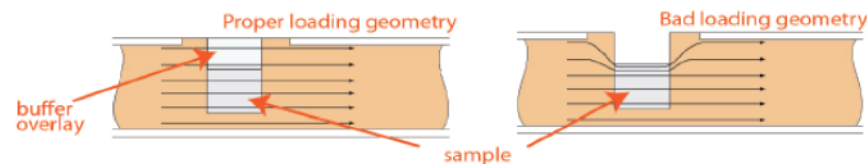
### E. Prepare the Cassette for Loading

1. **Dislodge bubbles from behind the elution modules.** Do this by gently tapping the cassette while holding sideways with the sample wells facing up.
2. **Remove the adhesive tapes.** Do this by placing the cassettes onto a benchtop and an firmly pulling with an even motion.
3. **Remove 80µl of buffer from each of the upper buffer chambers.** Refer to the diagram below for the location of the chambers.
4. **Remove all buffer from the elution modules and replace with 30µl of spare electrophoresis buffer.**
5. **Re-seal the elution modules** with the adhesive tape provided with the kit.
6. **Perform the Continuity Test.** Place the cassettes onto the nests, close the lid, and press "Test" in the Main Tab.



2.

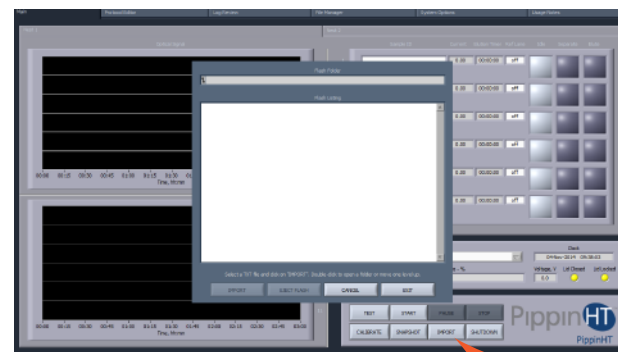
### F. Load Samples



1. **Check the buffer level in the sample wells.** Make sure that sample wells are completely full to the top with electrophoresis buffer. Fill with additional buffer, if necessary.
2. **Remove 30µl of buffer from the first sample well, and load 25µl of sample into that well.** Take care not to pierce the agarose with the pipette tip. There is gel on all sides and bottom of the sample well. In addition, there is an agarose "chimney" surrounding the top of the sample well that protrudes up through the cassette cover. When removing buffer, some users find it useful to immerse the pipette tip just below the surface of the buffer and follow the liquid level down with the tip as the buffer is removed. When adding sample, place tip of pipette just below the surface of the buffer, and follow the liquid level up with the tip as the well fills. Don't be concerned if the sample well slightly overfills. The density of the sample will allow it to sink before it can flow out of the well.
3. **Repeat step 2 for the remaining eleven wells, or use a 12-channel Multipipettor to load the wells at the same time.**

### G. Enter Sample Information (Optional)

Sample information may be manually keyed, read with an external barcode reader, or imported as a text file from a USB drive. A log file name prefix may be entered in the System Options Tab.



import .txt file

3.