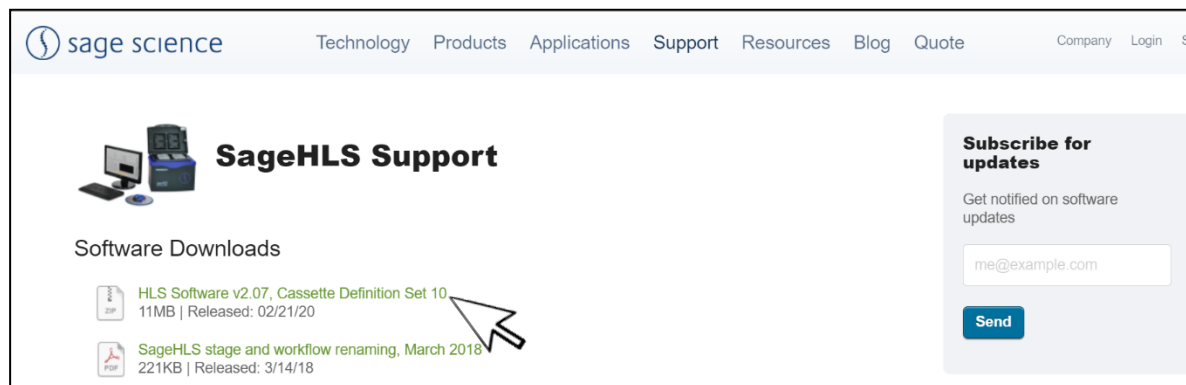


# Updating SageHLS Software

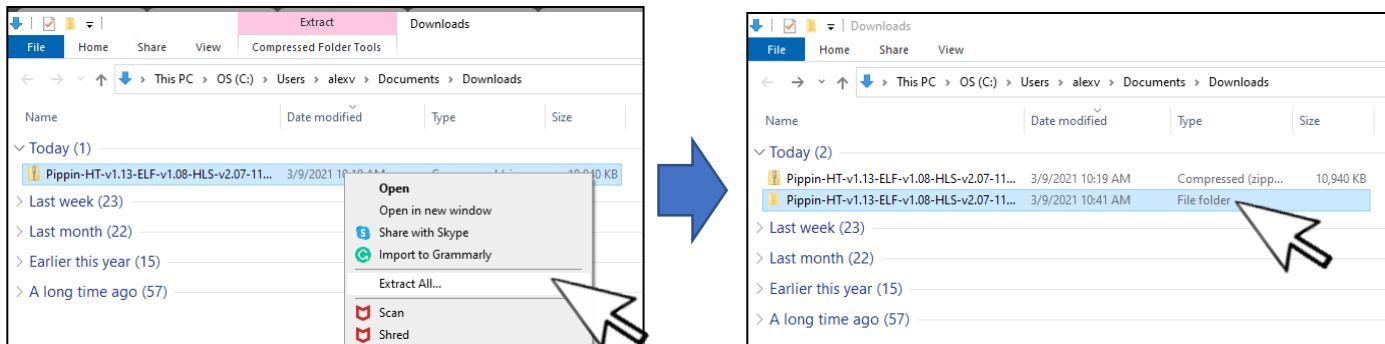
## Extracting the file to a USB flash drive

SageHLS upgrade software is available for download at <https://sagescience.com/product-support/sagehls-support/>. The files are provided in a zip file, and the contents must be extracted to the root directory of a USB flash drive:

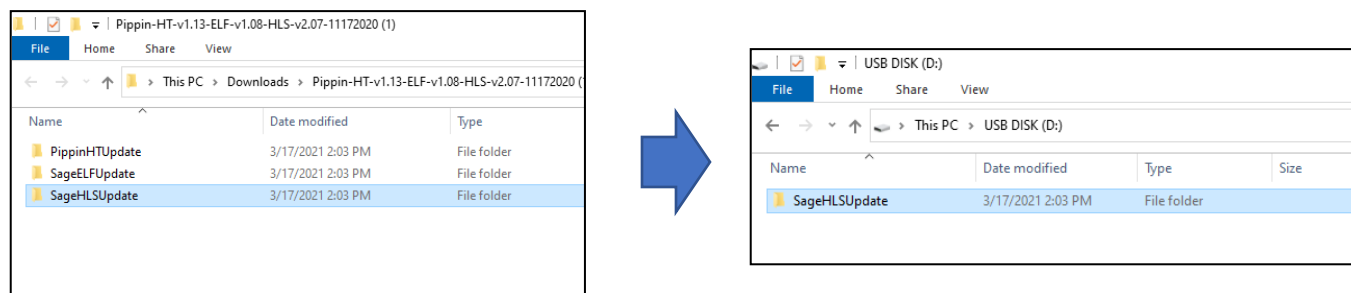
1. Click the PippinHT software file. The zip file will likely save to the “Downloads” folder on your computer.



2. Extract the zip file or unzip its contents onto your computer. It should contain a single folder with the same name as the zip file.



3. Within this folder there several subfolders. Transfer the “SageHLSUpdate” folder into the *root* directory of a USB drive. It is important that the file is not transferred to a subdirectory.

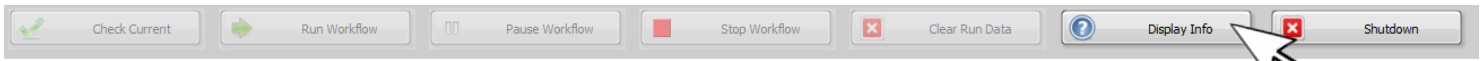


Downloads Folder

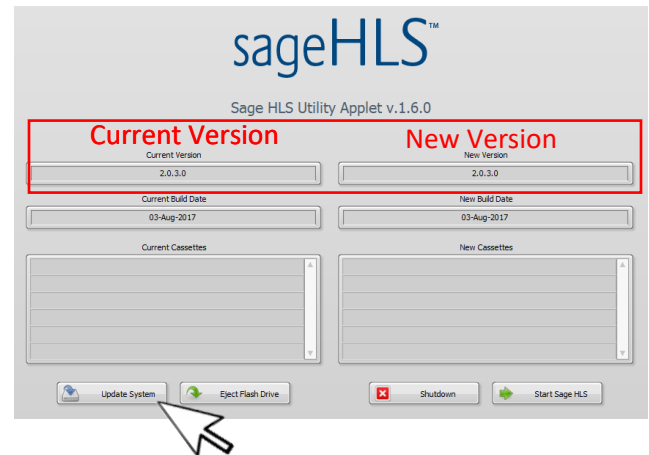
USB Drive

## Upgrading SageHLS Instrument Software

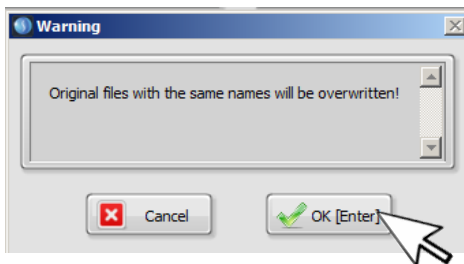
1. Insert the USB drive with the upgrade folder into the USB port on the front panel of SageHLS instrument.
2. From the Main Tab, Press “Display Info”. This will open the information window.



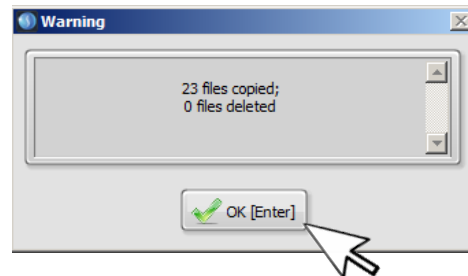
3. From the information window, press “Update Software”. This will open the Software Upgrade window (SageHLS Utility Applet). Press the “Update System” button.



4. A warning window will pop up. Press “OK”:



5. After the files have copied, a second window will pop-up. Press “OK”.



6. When the update is complete, the software version numbers will display the same revision numbers in the “Current Version” and “New Version” windows.

7. Press “Eject Flash Drive”, then remove the USB drive.



8. Press “Start SageHLS” to return to the main screen. The upgrade will be installed and the instrument ready to use.

