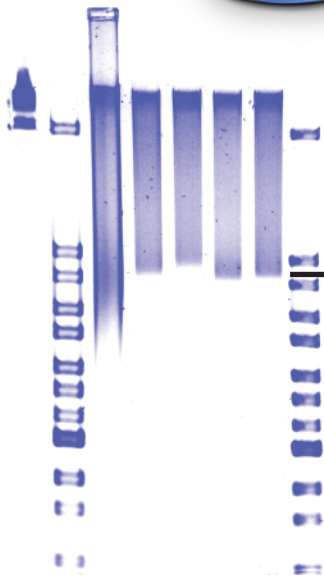


Double Your N50 in Half the Time

Introducing High Pass Plus™ for Long Read Sequencing

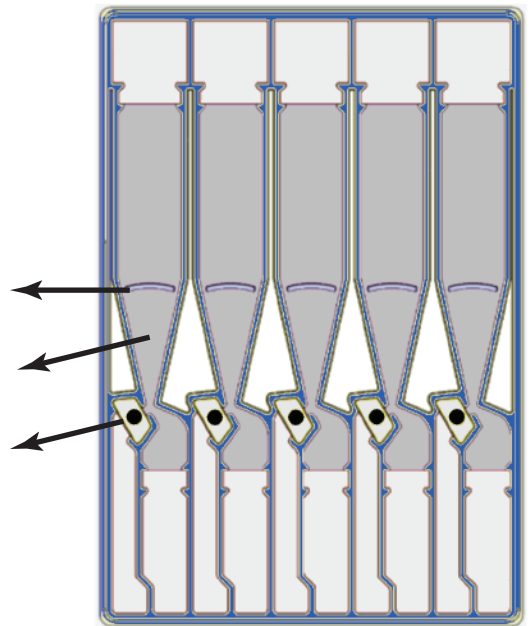


- 2X Faster Run Time
- 2X Loading Capacity
- Improved Recovery



>15 kb cut-off in 2.5 hours

- Larger sample well and gel surface area
- Shortened gel column and increased taper
- Larger elution well and filter membrane surface area



Cassette	Lane	Input (ng)	yield (ng)	% yield
1	2	532	390	73%
1	3	532	392	74%
1	4	532	390	73%
1	5	532	324	61%
2	1	532	462	87%
2	4	532	415	78%
2	5	532	375	70%
			Average	74%

BluePippin™ DNA Size Selection

Order Number: **BPLUS10**

Fits any BluePippin, software upgrade required.

Intrinsic recovery data. 165kb DNA fragment was loaded on to BluePippin High Pass Plus cassettes and then recovered after the >15kb High Pass collection was run. The input and recovered DNA were quantified with a Qubit fluorometer.