

BluePippin™ DNA size selection system

18-27 kb DNA target collection for mate-pair libraries



Pippin Prep™

Collect targets between
50 bp – 1.5 kb

BluePippin™

Collect targets between
50 bp – 50 kb

BluePippin mid-range gel cassettes collect DNA in sizes that can be very useful for mate-pair library construction. For researchers who desire larger circularized molecules, the Blue provides high-quality DNA with nicely sized distributions, in a reproducible manner. Collections are completed in as little as four hours.

The data presented here are results from validation studies of the BluePippin dye-free mid-range gel cassettes (part no. BMF7510). Collected target DNA was run on agarose slab gels and analyzed using TotalLab Quant™ software. Five replicate samples were collected at four target size ranges. Another test determined intrinsic recovery by collecting the DNA bands of a reference ladder, and comparing the input amounts to the collected amount.

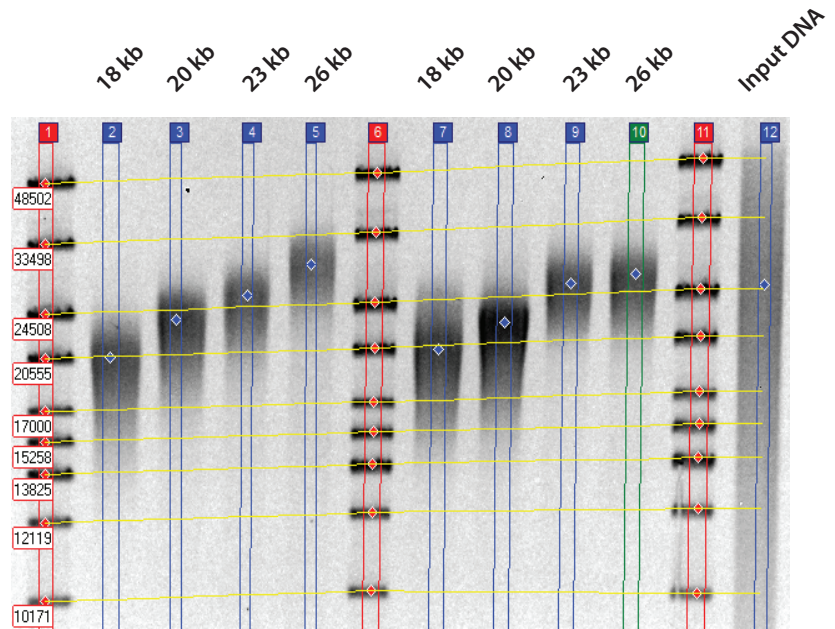


Figure 1. A TotalLab Quant™ gel image of the analysis of 2 sets of replicates. The input DNA was run in the rightmost lane.

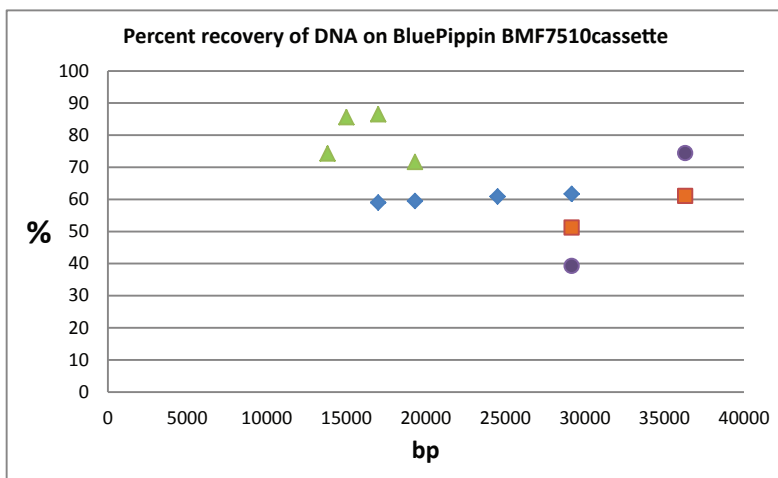


Figure 2. Percent recovery of DNA bands, by size.

Target (bp)	Gel Analysis Size (bp)	Min. Size Distribution (%CV)
18000	18163	16
20000	20617	15
23000	23660	14
26000	26148	16

Table 1. Average analyzed size and %CV of 5 replicate samples.

Fragments like you like them.



Sage Science, Inc. Suite 3150 • 500 Cummings Center • Beverly, MA 01915

info@sagescience.com • www.sagescience.com

978.922.1832